



# MASSACHUSETTS GENERAL HOSPITAL

## 1811 - 2011



## Department of Medicine Bicentennial Reunion

*200 Years:  
Looking Back & Thinking Forward  
The Changing Face of Medicine*



October 14-16, 2011  
Boston Marriott Copley Place



## Friday, October 14

### PROGRAM AT MGH

- 2:00 - 4:00 pm *Registration*  
O'Keefe Auditorium, Blake Building, 1<sup>st</sup> Floor
- 3:00 - 5:15 pm *Welcome*  
**PLENARY SESSION I**  
Perspectives on GME Training  
Past & Present  
O'Keefe Auditorium, Blake Building, 1<sup>st</sup> Floor
- 5:00 - 7:00 pm *Reunion Welcome Reception*  
MGH Thier Conference Room
- 7:30-10:30 pm *Chief Resident & Speakers Dinner*  
Liberty Hotel Courtyard
- 7:30-10:30 pm *F M C (Cash bar)*  
Liberty Hotel Main Lobby

## Saturday, October 15

### PROGRAM AT MARRIOTT COPLEY

- 6:30 - 7:30 am *Fun Run*
- 7:00 am - 6:30 pm *Registration*  
Atrium Lobby, 4<sup>th</sup> Floor
- 7:00 - 9:00 am *Continental Breakfast*  
Grand Ballroom Lobby, 4<sup>th</sup> Floor
- 7:30 - 8:30 am *Networking*  
Intern classes 1940-1969, Simmons Room, 3<sup>rd</sup> Floor  
Intern classes 1970-1979, Suffolk Room, 3<sup>rd</sup> Floor  
Intern classes 1980-1989, Vermont Room, 3<sup>rd</sup> Floor  
Intern classes 1990-1999, Wellesley Room, 3<sup>rd</sup> Floor  
Intern classes 2000-2011, Atrium, 3<sup>rd</sup> Floor
- 9:00 - 10:30 am **PLENARY SESSION II**  
Environment Supports Success  
Grand Ballroom
- 10:00 am - 3:00 pm *MGH Archives Display*  
Grand Ballroom Lobby
- 10:30 - 11:00 am *Break*
- 11:00 am - 12:30 pm **CONCURRENT PANEL SESSION I**  
Era of Genetics and Genomics  
Ballroom Salons H-K  
Ethical Challenges between Academia & Industry  
Ballroom Salons C-D  
Primary Care Models & Patient Care Standards  
Ballroom Salons A-B

## Saturday, October 15 (cont.)

### PROGRAM AT MARRIOTT COPLEY

- 12:30 - 2:00 PM *Lunch & Networking*  
**PLENARY SESSION III**  
State of the MGH  
Grand Ballroom
- 2:00 - 3:15 PM **CONCURRENT PANEL SESSION II**  
Stem Cell Biology  
Ballroom Salons A-B  
Delivering Global Healthcare  
Ballrooms Salons H-K  
Investing in Innovation  
Ballroom Salons C-D
- 3:15 - 3:45 PM *Break*
- 3:45 - 5:15 PM **PLENARY SESSION IV**  
Policy and Design of National Health Care  
Grand Ballroom
- 5:00 - 7:30 PM *Resident Poster Exhibition*  
Suffolk Room, 3<sup>rd</sup> Floor
- 6:00 - 7:30 PM *Cocktail Reception*  
3<sup>rd</sup> & 4<sup>th</sup> Floor Atriums
- 7:30 - Midnight *Alumni Gala Celebration*  
*Dinner & Dancing*  
Grand Ballroom

## Sunday, October 16

- 7:00 - 9:00 am *Continental Breakfast*  
Grand Ballroom Lobby, 4<sup>th</sup> Floor
- 7:30-9:00 am *Special Interests*  
  
Author's Corner  
Grand Ballroom
- Meet the Speakers & Open Networking*  
Ballroom Salons C-D
- 9:00 - 10:45 am **PLENARY SESSION V**  
The Direction of Academic Institutions  
Grand Ballroom
- 11:00 am - 12 noon *Optional MGH Tours*  
Meet in 4<sup>th</sup> Floor Atrium at 11:00 am

*Friday, October 14*

**PROGRAM AT MGH**

2:00 - 4:00 pm     **Registration**  
*O'Keefe Auditorium, Blake Building, 1<sup>st</sup> Floor*

3:00 - 5:15 pm     *Welcome*  
 Dennis A. Ausiello, M.D.  
 Chair, Department of Medicine, MGH  
*O'Keefe Auditorium, Blake Building, 1<sup>st</sup> Floor*

**PLENARY SESSION I**

**Perspectives on GME Training  
 Past & Present**  
 George Thibault, M.D.  
 Deb Weinstein, M.D.  
 Hasan Bazari, M.D.  
 Moderator: Steve Calderwood, M.D.

**Panel Discussion:  
 Challenges in Residency Training**  
 Davoren Chick, M.D.  
 Daisy Smith, M.D.

5:00- 7:00 pm     *Reunion Welcome Reception*  
*MGH Thier Conference Room*

*Meeting up with friends?  
 Need a dinner reservation?*  
 We have pre-booked dinner reservations available on a first-come first-served basis. Stop by the reservation table at the reception for more details.

7:30-10:30 pm     **Chief Resident & Speakers Dinner**  
*Liberty Hotel Courtyard*

7:30-10:30 pm     **F M C (Cash bar)**  
*Liberty Hotel Main Lobby*

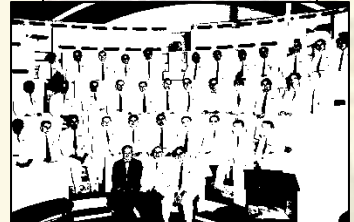
1938



1955



1966



1979



1986



1996



2002



2006



# Saturday, October 15

## PROGRAM AT MARRIOTT COPLEY

6:00 - 7:00 am **Fun Run**  
Bicentennial T-shirts provided to runners  
Meet in Marriott Copley lobby at 6:30 am  
Group will leave for Esplanade run at 6:45 am

7:00 am- 6:30 am **Registration**  
Atrium Lobby, 4<sup>th</sup> Floor

7:00 - 9:00 am **Continental Breakfast**  
Grand Ballroom Lobby, 4th Floor

7:30-8:30 am **Networking**  
Intern classes 1940-1969  
Simmons Room, 3<sup>rd</sup> Floor

Intern classes 1970-1979  
Suffolk Room, 3rd Floor

Intern classes 1980-1989  
Vermont Room, 3rd Floor

Intern classes 1990-1999  
Wellesley Room, 3rd Floor

Intern classes 2000-2011  
3rd Floor Atrium

9:00 - 10:30 am **PLENARY SESSION II**

### **Environment Supports Success**

Mike Brown, M.D.

Joe Goldstein, M.D.

Bruce Walker, M.D.

Moderator: Denny Ausiello, M.D.

Grand Ballroom

10:00 am - 3:00 pm **MGH Archives Display**

Grand Ballroom Lobby

10:30-11:00 am **Break**

11:00 am-12:30 pm

## CONCURRENT SPECIAL INTEREST SESSION I

### **Option 1:**

### **The Era of Genetics and Genomics**

David Altshuler, M.D., Ph.D.

David Relman, M.D.

Mark Fishman, M.D.

Moderator: John Potts, M.D.

Ballroom Salons H-K

### **Option 2:**

### **Ethical Challenges between Academia and Industry**

Bill Crowley, M.D.

Steven Hyman, M.D.

Roy Vagelos, M.D.

Moderator: Sam Thier, M.D.

Ballroom Salons C-D

### **Option 3:**

### **Primary Care Models and Patient Care Standards**

Michael Barry, M.D.

Lanny Gardner, M.D.

Kate Treadway, M.D.

Jim O'Connell, M.D.

Moderator: Valerie Stone, M.D., M.P.H.

Ballroom Salons A-B

12:30 - 2:00 pm

## **Lunch & Open Networking**

## PLENARY SESSION III

### **State of the MGH**

Peter Slavin, M.D.

### **MGH Office of Women's Careers**

Nancy Rigotti, M.D.

### **MGH Multicultural Affairs Office**

Win Williams, M.D.

Grand Ballroom

# Saturday, October 15

2:00 - 3:15 pm

## CONCURRENT SPECIAL INTEREST SESSION II

### Option 1

#### Stem Cell Biology

Ballroom Salons A-B

George Daley, M.D., Ph.D.  
Jay Rajagopal, M.D.  
Ken Chien, M.D., Ph.D.  
Moderator: David Scadden, M.D.

### Option 2

#### Delivering Global Healthcare

Ballroom H-K

Jennifer Leaning, M.D., S.M.H.  
Kris Olson, M.D.  
Megan Murray, M.D., M.P.H., Sc.D.  
Larry Ronan, M.D.  
Moderator: David Bangsberg, M.D., M.P.H.

### Option 3

#### Investing in Innovation

Ballroom C-D

Al Mulley, M.D., M.P.P.  
Rushika Fernandopulle, M.D.  
Mike Rosenblatt, M.D.  
Henry Chueh M.D.  
Moderator: Brit Nicholson, M.D.

3:15 - 3:45 pm Break

3:45 - 5:15 pm PLENARY SESSION IV

#### The Policy and Design of National Health Care

David Blumenthal, M.D.  
Jonathan Woodson, M.D.  
Farzad Mostashari, M.D., Sc.M.  
Moderator: Eve Slater, M.D.

Grand Ballroom

5:00 - 6:00 pm Free Time

5:00 - 7:30 PM Resident Poster Exhibition  
Suffolk Room, 3rd Floor

6:00 - 7:30 pm Cocktail Reception  
3rd & 4th Floor Atriums

7:30 - Midnight Alumni Gala Celebration  
Dinner & Dancing

Moderator: Samuel Thier, M.D.  
Keynote Speaker:  
Daniel D. Federman, M.D.

Grand Ballroom, 4th Floor

# Sunday, October 16

7:00 - 9:00 am Continental Breakfast  
Grand Ballroom Lobby, 4th Floor

7:30-9:00 am Special Interests

### Author's Corner

Siddhartha Mukherjee, M.D.  
Dean Ornish, M.D.  
Webster Bull  
Moderator: Jay Vyas, M.D., Ph.D.

Grand Ballroom

### Meet the Speakers

Ballroom Salons C-D

9:00 - 10:45 am PLENARY SESSION V

#### The Direction of Academic Institutions

Lee Goldman, M.D.  
John Carethers, M.D.  
Larry Jameson, M.D., Ph.D.  
Sandy Williams, M.D.  
Moderator: Dan Podolsky, M.D.

Grand Ballroom

11:00 am - 12 noon Optional MGH Tours  
Meet in 4th Floor Atrium at 11:00 am

**Dennis A. Ausiello, M.D.**  
Chair, MGH Department of Medicine



**Denny Ausiello, M.D.** is the Jackson Professor of Clinical Medicine at Harvard Medical School, Chief of Medicine at Massachusetts General Hospital (MGH), and Chief Scientific Officer of Partners Healthcare. He received his undergraduate degree from Harvard College and his medical degree from the University of Pennsylvania. He has made a substantial contribution to knowledge of epithelial biology in the areas of membrane protein trafficking, ion channel regulation and signal transduction. He has published numerous articles, book chapters, and textbooks and currently serves as the co-editor of *Cecil's Textbook of Medicine*, now in its 23rd edition. Dr. Ausiello was elected to the Institute of Medicine of the National Academy of Science in 1999 and the American Academy of Arts and Sciences in 2003. He has written for the *New York Times*, the *Wall Street Journal*, and the *Boston Globe* on health subjects, including human genetics, clinical trials, and the relationship between the academy and industry.



**Samuel O. Thier, M.D.**  
Professor of Medicine and  
Health Care Policy, Emeritus  
Harvard Medical School



**Sam Thier, M.D.** is professor of Medicine and Health Care Policy, Emeritus at Harvard Medical School. He had been professor of Medicine and professor of Health Care Policy at Harvard Medical School from 1994-2007. Previously he has served as president and chief executive officer of Partners HealthCare System, president of The Massachusetts General Hospital, and Brandeis University's president. He served as president of the Institute of Medicine, National Academy of Sciences and as chairman of the Department of Internal Medicine at Yale University School of Medicine, where he was Sterling Professor. Dr. Thier is an authority on internal medicine and kidney disease and is also known for his expertise in national health policy, medical education and biomedical research.



**John T. Potts, M.D.**  
Director of Research and Physician-in-Chief Emeritus  
MGH

**John Potts, M.D.** did his internship and residency at the Massachusetts General Hospital from 1957 to 1959. He went to the National Institutes of Health in 1959 as a Clinical Associate and remained there until 1968. He conducted research on protein chemistry with Nobel Laureate Christian Anfinsen at the National Heart Institute, and then became the Head of the Section on Polypeptide Hormones where he began his work on the structural analysis of parathyroid hormone and calcitonins. He returned to the Massachusetts General Hospital as the Chief of the Endocrine Unit in 1968. Dr. Potts then served as the Chairman of the Department of Medicine and the Physician-in-Chief at MGH as well as Jackson Professor of Medicine at Harvard Medical School from 1981 to 1996. Dr. Potts then became the Jackson Distinguished Professor of Medicine and served as Director of Research at MGH from 1995 to 2004. He continues his research and clinical activities as a member of the Endocrine Unit of the Department of Medicine. Dr. Potts has been a pioneer in the chemistry and biology of parathyroid hormone (PTH) and its role in clinical disorders of bone and mineral ion metabolism. The author or co-author of over 500 scientific publications, Dr. Potts has been elected to the National Academy of Sciences, the Institute of Medicine and the American Academy of Arts and Sciences.

**Jatin M. Vyas, M.D., Ph.D.**  
Assistant Professor in Medicine  
Division of Infectious Disease, MGH



**Jay Vyas, MD PhD** is an Assistant Professor in Medicine in the Division of Infectious Disease, Department of Medicine at the Massachusetts General Hospital. He attended the University of Texas in Austin, Texas. He completed the Medical Scientist Training Program at Baylor College of Medicine in Houston, TX where he received his PhD in Immunology in the laboratory of Robert R. Rich, MD in 1994 and his MD in 1996. Dr. Vyas completed his internship and residency in Internal Medicine at Massachusetts General Hospital in Boston, MA, and a fellowship in Infectious Diseases in the Partners Combined Program. He served as Chief Resident in Medicine at MGH under Dennis Ausiello, MD. He completed his post-doctoral fellowship in the laboratory of Hidde Ploegh, PhD at the Harvard Medical School and the Whitehead Institute for Biomedical Research. Jay joined the faculty in the Division of Infectious Disease, Department of Medicine at MGH in 2008 and focuses on basic investigations of host pathogen interactions including immune responses to fungal pathogens and dendritic cell biology.

## PLENARY SESSION I: Perspectives on GME Training: Past & Present

### George E. Thibault, M.D.

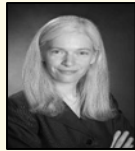
President, Macy Foundation



**George Thibault, M.D.** became the seventh president of the Josiah Macy Jr. Foundation in January 2008. Immediately prior to that, he served as Vice President of Clinical Affairs at Partners Healthcare System in Boston and Director of the Academy at Harvard Medical School (HMS). He was the first Daniel D. Federman Professor of Medicine and Medical Education at HMS and is now the Federman Professor, Emeritus. Dr. Thibault previously served as Chief Medical Officer at Brigham and Women's Hospital and as Chief of Medicine at the Harvard affiliated Brockton/West Roxbury VA Hospital. He was Associate Chief of Medicine and Director of the Internal Medical Residency Program at the Massachusetts General Hospital (MGH). At the MGH he also served as Director of the Medical ICU and the Founding Director of the Medical Practice Evaluation Unit.

### Debra Weinstein, M.D.

Vice President, Graduate Medical Education  
Partners Healthcare System



**Debra Weinstein, M.D.** is responsible for overseeing more than 200 graduate medical education (GME) programs with 2000 residents and fellows as Vice President for Graduate Medical Education at the Partners Healthcare System. Dr. Weinstein is a graduate of Wellesley College, where she majored in Music. After receiving her M.D. from Harvard Medical School, she completed clinical training in Internal Medicine and Gastroenterology at Massachusetts General Hospital, where she served as Chief Resident and later as Associate Chief/Program Director in Internal Medicine. She is an Assistant Professor of Medicine at Harvard Medical School and maintains a limited practice in gastroenterology. Dr. Weinstein serves on the Board of Directors of the Accreditation Council on Graduate Medical Education (ACGME) and Chairs the Journal Oversight Committee for the ACGME's recently launched Journal of GME.

### Hasan Bazari, M.D.

Director, Internal Medicine  
Residency Program, MGH



**Hasan Bazari, M.D.** was born in India and raised in Malaysia. He attended Columbia College to obtain his B.A and subsequently obtained a M.A and M.Phil in Biology at Columbia University. He obtained his M.D. at the Albert Einstein College of Medicine in New York. He did his Internal Medicine residency and Nephrology fellowship at the Massachusetts General Hospital between 1983 and 1989. He has been a member of the faculty at MGH since 1989 and took on the role of Program Director for the Internal Medicine Residency in 1994. He is also the current Clinical Director of Nephrology at the Massachusetts General Hospital. He is an Associate Professor of Medicine at Harvard Medical School. He is an active member of the Association of Program Directors in Internal Medicine (APDIM), served on their national Program Planning Committee. He has been the recipient of multiple awards for teaching, leadership and humanism including the Parker Palmer "Courage to Teach Award" given by the Accreditation Council for Graduate Medical Education in 2007.

### Stephen B. Calderwood, M.D.

Morton N. Swartz Academy Professor of Medicine  
Chief, Division of Infectious Diseases, MGH  
Vice-Chair, Department of Medicine, MGH  
Faculty Dean for Education, MGH



**Stephen Calderwood, M.D.** received his Bachelor of Science degree from Harvard University (1971) and his M. D. degree from Harvard Medical School (1975). He did medical residency training at the Massachusetts General Hospital, as well as Clinical and Research Fellowship in Infectious Diseases and Chief Residency at MGH, before joining the faculty there and at HMS in 1982. He did additional laboratory research training with Dr John Mekalanos at HMS, before establishing his own research laboratory at the MGH in 1988. Dr. Calderwood's research interests focus on microbial pathogenesis, microbial-host interactions, regulation of gene expression in the human host, immune responses following infection, and vaccine development. He is the Principal Investigator of an International Collaborations in Infectious Disease Research grant focused on cholera with the International Centre for Diarrhoeal Disease Research in Dhaka, Bangladesh. Dr. Calderwood is a Fellow of the American College of Physicians, the Infectious Diseases Society of America, the American Academy of Microbiology, and the American Association for the Advancement of Science.

## Panel Discussion: Challenges in Residency Training

### Davoren Chick, M.D.

Internal Medicine Residency Associate Program Director  
University of Michigan School of Medicine



**Davoren Chick, M.D.** earned her M.D. in 1992 at Columbia University's College of Physicians and Surgeons, and completed her internal medicine residency at Massachusetts General Hospital in 1995. She then joined the faculty at Massachusetts General Hospital as a clinician-educator for 6 years as part of the Massachusetts General Medical Group. In 2001, she joined Michigan State University's College of Human Medicine in East Lansing, Michigan, first as Medical Director of Inpatient Teaching Services then in 2002 as Program Director of their Internal Medicine Residency. In 2007, she moved to the University of Michigan, where she now serves as Internal Medicine Residency Associate Program Director in charge of curricular innovation and longitudinal primary care training. Dr. Chick's medical education leadership has been widely recognized: she serves as a Councilor of the Association of Program Directors in Internal Medicine and she has been honored with invited plenaries or awards from Society of General Internal Medicine, Clerkship Directors in Internal Medicine, Association of Program Directors in Internal Medicine, and Alliance for Academic Internal Medicine.



### Cynthia Smith, M.D.

Director, Internal Medicine Residency Program  
Lankenau Medical Center

**Cynthia Smith, MD** is the Internal Medicine Residency Program Director at Lankenau Medical Center. She is a Clinical Associate Professor at Jefferson Medical College. She received an M.D. degree from Columbia College of Physicians and Surgeons. She is board certified in internal medicine and a Fellow of the American College of Physicians. After completing her Internal Medicine Residency at Massachusetts General Hospital, she joined the medical staff of MGH and the faculty of Harvard Medical School. She was practiced primary care Internal Medicine at MGH-Revere until 2000 when she relocated to Philadelphia. She joined the medical staff of Lankenau in 2000 as an Associate Program Director for the Internal Medicine Residency Program. In July 2002, she founded the Academic Hospitalist Program and served as the Hospitalist Program Director until 2005. From 2003 onwards she has been the Residency Program Director and part time clinic preceptor and academic hospitalist. In addition to her responsibilities at Lankenau Medical Center, Cynthia has been active nationally working to improve residency education. She has served on the APDIM (Association of Program Directors in Internal Medicine) program planning committee and has spent the past three years on the APDIM Council.

## PLENARY SESSION II: How Environment Supports Success

### Michael S. Brown, M.D.

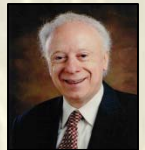
Regental Professor, Director, Jonsson Center for  
Molecular Genetics  
Nobel Laureate  
University of Texas Southwestern Medical Center



**Michael Brown, M.D.** received an M.D. degree in 1966 from the University of Pennsylvania. He was a resident at the Massachusetts General Hospital, and a post doctoral fellow with Earl Stadtman at the National Institutes of Health. He is currently Director of the Jonsson Center for Molecular Genetics at the University of Texas Southwestern Medical School in Dallas. Dr. Brown and his colleague, Dr. Joseph L. Goldstein, discovered the low density lipoprotein (LDL) receptor, which controls cholesterol in blood. They showed that mutations in this receptor cause Familial Hypercholesterolemia, a disorder that leads to premature heart attacks. Their work laid the groundwork for drugs called statins that lower blood cholesterol and prevent heart attacks. Statins are taken daily by more than 20 million people worldwide. Brown and Goldstein shared many awards for this work, including the U.S. National Medal of Science and the Nobel Prize for Medicine or Physiology.

### Joseph L. Goldstein, M.D.

Regental Professor, Julie and Louis A. Beecherl  
Distinguished Chair in Biomedical Science  
Nobel Laureate  
University of Texas Southwestern Medical Center



**Joseph Goldstein, M.D.** is currently Chairman of the Department of Molecular Genetics at the University of Texas Southwestern Medical Center at Dallas. In 1985, he was named Regental Professor of the University of Texas. He also holds the Paul J. Thomas Chair in Medicine and the Julie and Louis A. Beecherl Distinguished Chair in Biomedical Science. Dr. Goldstein and his colleague, Michael S. Brown, discovered the low density lipoprotein (LDL) receptor and worked out how these receptors control cholesterol homeostasis. At the basic level, this work opened the field of receptor-mediated endocytosis, and at the clinical level it helped lay the conceptual groundwork for development of drugs called statins that lower blood LDL-cholesterol and prevent heart attacks. Drs. Goldstein and Brown shared many awards for this work, including the Lasker Award in Basic Medical Research (1985), Nobel Prize in Physiology or Medicine (1985), and National Medal of Science (1988). In recent work, Drs. Goldstein and Brown discovered the SREBP family of transcription factors and showed how these membrane-bound molecules control the synthesis of cholesterol and fatty acids through a newly described process of Regulated Intramembrane Proteolysis.

### Bruce Walker, M.D.

Director of the Ragon Institute of MGH, MIT  
and Harvard



**Bruce Walker, M.D.** is a Professor of Medicine at Harvard Medical School, a Howard Hughes Medical Institute Investigator, and the Director of the Ragon Institute of MGH, MIT and Harvard. In addition to his clinical duties as a board certified Infectious Disease specialist, his research focuses on cellular immune responses in chronic viral infections, with a particular focus on HIV. Dr. Walker is also an Adjunct Professor at the Nelson Mandela School of Medicine in Durban. There he collaborates with the Doris Duke Medical Research Institute at the University of KwaZulu-Natal and serves as a Principal Investigator in the HIV Pathogenesis Program, an initiative to study the evolution of the HIV and the immune responses effective in controlling this virus, as well as to contribute to training the next generation of African scientists.

## CONCURRENT SESSION I: The Era of Genetics and Genomics



### David Altshuler, M.D., Ph.D.

Deputy Director and Chief Academic Officer  
Director, Program in Medical and Population Genetics  
Broad Institute of Harvard and MIT

**David Altshuler, M.D. Ph.D.** is a Professor of Genetics and Medicine at Harvard Medical School, and in the department of Molecular Biology, the Center for Human Genetic Research, and the Diabetes Unit at Massachusetts General Hospital. David is one of four founding members of the Broad Institute of Harvard and MIT and serves as the Institute's first Deputy Director and Chief Academic Officer. He is also Director of Broad's Program in Medical and Population Genetics. David studies human genetic variation and its application to disease, using tools and information from the Human Genome Project. He has been a lead investigator in The SNP Consortium, the International HapMap Project, and the 1,000 Genomes Project - public-private partnerships that have created public maps of human genome sequence variation as a foundation for disease research.



### David Relman, M.D.

Thomas M. and Joan C. Merigan Professor,  
Stanford University School of Medicine

**David A. Relman, M.D.**, is the Thomas C. and Joan M. Merigan Professor in the Departments of Medicine, and of Microbiology and Immunology at Stanford University, and Chief of Infectious Diseases at the VA Palo Alto Health Care System in Palo Alto, California. He received an S.B. (Biology) from MIT (1977), M.D. from Harvard Medical School (1982), completed his clinical training in internal medicine and infectious diseases at Massachusetts General Hospital, served as a postdoctoral fellow in microbiology at Stanford University, and joined the faculty at Stanford in 1994. His current research focus is the human indigenous microbiota (microbiome), and in particular, the nature and mechanisms of variation in patterns of microbial diversity within the human body as a function of time (microbial succession), space (biogeography within the host landscape), and in response to perturbation, e.g., antibiotics (community robustness and resilience).



### Mark C. Fishman, M.D.

President of the Novartis Institutes  
for BioMedical Research

**Mark Fishman, M.D.** is President of the Novartis Institutes for Biomedical Research, the discovery arm of Novartis. There he has introduced new approaches to drug discovery, based in part upon comprehensive molecular pathway dissection combined with the use of genetically defined patient populations for clinical trials, which has doubled the number of novel medicines brought to full development. Prior to joining Novartis, Dr. Fishman was Chief of Cardiology at the MGH, Professor of Medicine at Harvard Medical School, and Director of the Cardiovascular Research Center. At MGH his lab helped to found the field of zebrafish genetics, an approach they used to identify novel genes and pathways that direct fashioning of organ systems during development.

## CONCURRENT SESSION I: Ethical Challenges between Academia and Industry



### William F. Crowley, Jr., MD

Director of Clinical Research, MGH  
Director of the HMS NICHD,  
Center of Excellence in Reproductive Endocrinology

**William Crowley, M.D.** is a Professor of Medicine at Harvard Medical School; Director of Clinical Research at the Mass General Hospital (MGH), and Director of the Harvard Medical School's NICHD Center of Excellence in Reproductive Endocrinology. During his 42-years at the MGH, Dr. Crowley and his colleagues have pioneered the use of GnRH analogues in humans, establishing them as the first treatment of children with central precocious puberty. This finding established a principle of therapy using GnRH agonist-induced pituitary desensitization that is now used in men with prostate cancer and women with endometriosis and uterine fibroids. On October 16, 2011, Dr. Crowley will become the first incumbent to occupy HMS's Daniel K. Podolsky Chair of Medicine.



### Steven Hyman, M.D.

Distinguished Service Professor of Stem Cell  
and Regenerative Biology at Harvard University  
Provost of Harvard University

**Steven Hyman, M.D.** is Distinguished Service Professor of Stem Cell and Regenerative Biology at Harvard University and a visiting scholar at the Broad Institute of Harvard and MIT. In June 2011, Dr. Hyman completed a decade of service as Provost of Harvard University. As Provost he served as Harvard's chief academic officer. He also had a special focus on the development of collaborative scientific initiatives that span multiple disciplines, that cross the boundaries of Harvard's schools and affiliated hospitals, and that extend to other universities in the region. From 1996 to 2001, he served as Director of the US National Institute of Mental Health (NIMH), the component of the US National Institutes of Health charged with generating the knowledge needed to understand and treat mental illness. At NIMH he emphasized investment in emerging genetic technologies and neuroscience, and initiated a series of large clinical trials performed in "real world" populations. He is a member of the Institute of Medicine of the US National Academies of Science, a Fellow of the American Academy of Arts and Sciences, a Fellow of the American College of Neuropsychopharmacology, and a Distinguished Life Fellow of the American Psychiatric Association. Dr. Hyman received his BA from Yale College in 1974 summa cum laude, and an MA from the University of Cambridge, which he attended as a Mellon fellow studying the history and philosophy of science. He earned his MD from Harvard Medical School in 1980 cum laude.



### Roy Vagelos, M.D.

Retired Chairman and CEO, Merck & Co., Inc

Roy Vagelos received an AB in 1950 from the University of Pennsylvania and an MD in 1954 from Columbia University. Following a residency at the Massachusetts General Hospital, he joined the National Institute of Health where from 1956-66 he served as Senior Surgeon and then Section Head of Comparative Biochemistry. In 1966 he became Chairman, Department of Biological Chemistry, Washington University School of Medicine in St. Louis and in 1973 founded the University's Division of Biology and Biomedical Sciences. He joined Merck Research Laboratories in 1975 where he was president until 1985 when he became CEO and later Chairman of Merck & Co., Inc. Dr. Vagelos is a member of the National Academy of Sciences, the Institute of Medicine, the American Academy of Arts and Sciences and the American Philosophical Society.

## CONCURRENT SESSION I: Primary Care Models and Patient Care Standards

### Michael Barry, M.D.

Medical Director ,  
John D. Stoeckle Center for Primary Care Innovation  
Professor of Medicine, Harvard Medical School  
President, Foundation for Informed Medical Decision Making



**Michael Barry, M.D.** practices primary care medicine in Internal Medicine Associates and serves as Medical Director of the John D. Stoeckle Center for Primary Care Innovation at the Massachusetts General Hospital, and Professor of Medicine at Harvard Medical School. Michael became the President of the Foundation for Informed Medical Decision Making in 2009. The Foundation's mission is to inform and amplify the patient's voice in health care decisions (see [www.fimdm.org](http://www.fimdm.org)). He is a past President of the Society for Medical Decision-Making (SMDM) and the Society of General Internal Medicine. Dr. Barry has led many prominent research studies including the Patient Outcome Research Team for Prostatic Diseases.

### Lanny Gardner, M.D.

Miller Professor of Medicine  
and Executive Dean for Education and Policy,  
University of Miami School of Medicine



**Laurence B. Gardner, M.D.** ("Lanny") graduated from the Massachusetts Institute of Technology with a B.S. in Humanities and Science in 1963. He attended Harvard Medical School, graduating in 1967, *magna cum laude*. Dr. Gardner completed two years of training in Internal Medicine at the Massachusetts General Hospital and moved to the Hospital of the University of Pennsylvania where he completed a fellowship in Nephrology and served as Chief Medical Resident. After two years of active duty with the U.S. Army, he joined the faculty at the University of Miami School of Medicine. His entire academic career has been in Miami, where after 12 years as Chairman of the Department of Medicine, he now serves as the Miller Professor of Medicine and Executive Dean for Education and Policy. Dr. Gardner has published numerous articles, book chapters and books dealing with a variety of subjects in Internal Medicine. His particular interests include acid-base physiology and clinical disorders of electrolyte metabolism, as well as health policy. He is currently studying the role of academic health centers in the development of health policy in the United States.

### James O'Connell, MD

Founder and President,  
Boston Health Care for the Homeless  
Editor, Manual of Communicable Diseases in Shelters  
Instructor, Division of Public Health Practice, Harvard Medical School



**Jim O'Connell, M.D.** began fulltime work caring for homeless persons with the Boston Health Care for the Homeless Program after finishing residency in 1985. He has spent the past 26 years helping to implement a service delivery model to care that includes daily clinics at MGH and BMC as well as clinics in over 75 shelters and soup kitchens through metropolitan Boston. Continuity of care is facilitated by an EMR created by the MGH Laboratory of Computer Science in 1995, the first EMR for this vulnerable population in the country. He has helped develop medical respite care for homeless persons who would otherwise require acute care hospitalization, and the 104-bed Barbara McInnis House is the largest and oldest such facility in the country. Eight graduates of MGH residency programs have taken fulltime positions with BHCHP in the past two decades.

### Valerie Stone, M.D., M.P.H.

Professor of Medicine, Harvard Medical School  
Director, Primary Care Internal  
Medicine Residency Program  
Associate Chief for Teaching and Training,  
General Medicine Division, MGH



**Valerie Stone, M.D.** is a clinician in the Internal Medicine Associates and Infectious Disease Associates at MGH and has joint appointments in the General Medicine and Infectious Diseases Divisions at MGH and Harvard Medical School. She is also a Senior Scientist at the Stoeckle Center for Primary Care Innovation, where her scholarly focus is on disparities in HIV/AIDS care by race/ethnicity and current challenges in primary care education. She is also the first author of a book entitled "HIV/AIDS in U.S. Communities of Color" which was published in 2009. Dr. Stone received her medical degree from Yale University School of Medicine and completed her residency in internal medicine at Case Western Reserve University Hospitals in Cleveland. She did a health services research fellowship at Harvard and also completed a fellowship in infectious diseases at the Boston University School of Medicine hospitals. Dr. Stone is a member of the Board of Regents of the American College of Physicians.

### Kate Treadway, M.D.

Gerald S. Foster Academy Associate Professor  
in Medicine, HMS



Dr. Treadway is a general internist at Massachusetts General Hospital. She has been at MGH since 1978 when she began her primary care residency program. In addition to her active clinical practice at MGH, Dr. Treadway is extensively involved in medicals student education. She is an Associate Master of the Walter B. Cannon Society of Harvard Medical School. She is also the Gerald S. Foster Academy Associate Professor in Medicine for recognition of her contribution to teaching at Harvard Medical School. She is actively involved in teaching at several levels of medical school education and is particularly interested in the complex nature of the doctor-patient relationship. She created and is the course director of The Introduction to the Profession, a course for all incoming first year Harvard Medical and Dental students. Dr. Treadway is the co-director of the MGH site for Patient-Doctor II at Harvard Medical School for second year students and has been a mentor for third year students who are at the MGH for their principle clinical experience. She is currently creating a "Capstone Course" for the end of medical school to be given prior to graduation for all graduating students. She was just appointed as the Dr. Mark and Karen Lawrence Director of Professionalism at Harvard Medical School.

## PLENARY SESSION III: State of the MGH

### Peter L. Slavin, M.D.

President, Massachusetts General Hospital  
Professor of Health Care Policy,  
Harvard Medical School



**Peter L. Slavin, MD** graduated from Harvard College in 1979, Harvard Medical School in 1984, and Harvard Business School in 1990. He did his training in Internal Medicine at Massachusetts General Hospital from 1984 to 1987. While on staff at MGH, he attended Harvard Business School and developed the hospital's first quality and utilization management program. In 1994, he was appointed as Senior Vice President and Chief Medical Officer. In 1997, he was recruited to serve as the first president of the recently merged Barnes-Jewish Hospital in St. Louis, Missouri, the adult teaching hospital of the Washington University Medical Center. In 1999, he returned to Boston to serve as Chairman and Chief Executive Officer of the Massachusetts General Physicians Organization, which included over 1,700 physicians and employed nearly 1,000 of them. In January 2003, he was appointed to his current position. MGH operates over 900 inpatient beds, has an annual operating budget of over \$1.9 billion per year, is the largest employer in the City of Boston, and has the largest research program (over \$500 million per year) of any hospital in the United States.

### Nancy Rigotti, M.D.

Professor of Medicine,  
Harvard Medical School  
Associate Chief, MGH General Medicine Division



**Nancy Rigotti, M.D.** is a graduate of Stanford University, Harvard Medical School, the Primary Care Internal Medicine residency at MGH and the General Medicine Fellowship at Harvard Medical School. She is an academic generalist and primary care physician at MGH, where she is now Professor of Medicine at Harvard Medical School, an Associate Chief of the MGH General Medicine Division, and a Past President of the Society of General Internal Medicine. Her academic focus is smoking cessation and tobacco control policy. She served as President of the Society for Nicotine and Tobacco Research, deputy editor of the journal *Nicotine and Tobacco Research*, and author and scientific editor for the US Surgeon General's reports on smoking. She has a longstanding interest in the advancement of women in medical careers and is the Director of the Office of Women's Careers at MGH, which aims to promote the advancement of female faculty across the institution.

### Winfred Williams, M.D.

Founding Director, MGH Multicultural Affairs Office



**WinWilliams, M.D.** is a faculty member in the Department of Medicine and the Division of Nephrology at the MGH. In addition to being an active provider of clinical care in the MGH Renal and Transplant Units, he been an active teacher of residents and fellows about nephrology and general medicine, and guided the formative stages of minority students (exposing them to and educating them about clinical research and medical careers). Dr. Williams is the Founding Director of the MGH Multicultural Affairs Office, which began almost 20 years ago as the Office of Minority Health Professions. He is also a member of the OPTN/UNOS Executive Committee and its Board of Directors and has served in leadership roles in UNOS, and the American Societies of Transplantation and Nephrology. His clinical research efforts focus on exploring the genomic determinants of kidney transplant outcomes.

## CONCURRENT SESSION II: Stem Cell Biology

### George Q. Daley, M.D., Ph.D.

Samuel E. Lux IV Professor of Hematology/Oncology  
Director, Stem Cell Transplantation Program,  
Children's Hospital Boston  
Professor of Biological Chemistry  
and Molecular Pharmacology, Harvard Medical School



**George Q. Daley, M.D. Ph.D.** is an active investigator of the Howard Hughes Medical Institute. He is the past-President of the International Society for Stem Cell Research ('07-'08), and was Chief Resident in Medicine at MGH ('94-'95). Daley's research contributions include the derivation of patient-specific induced pluripotent stem cells for over a dozen human diseases, demonstration of combined gene and cell therapy via customized stem cells, and creation of a murine model of human chronic myeloid leukemia that validated BCR/ABL as a drug target. Dr. Daley has received the NIH Director's Pioneer Award, the Judson Daland Prize from the American Philosophical Society, the E. Mead Johnson Award from the American Pediatric Society, and the E. Donnall Thomas Prize from the American Society for Hematology.

### David Scadden, M.D.

Gerald and Darlene Jordan Professor  
of Medicine at Harvard University;  
Co-Director, Harvard Stem Cell Institute  
Director, Center for Regenerative Medicine, MGH



**David Scadden, M.D.** is the Gerald and Darlene Jordan Professor of Medicine at Harvard University. He and Professor Douglas Melton founded and jointly direct the Harvard Stem Cell Institute which is the largest institute dedicated to bringing stem cell biology to medical care in the world. With Professor Melton, Professor Scadden founded and co-chairs the Department of Stem Cell and Regenerative Biology Department at Harvard University, the first department to span faculties in Harvard's 371 year history. He is a hematologist/oncologist and directs the Center for Regenerative Medicine at the Massachusetts General Hospital while also chairing the MGH Cancer Center Hematologic Malignancies program. He is an expert on the medical applications of stem cell biology with a particular emphasis on their use in the settings of cancer and AIDS.

### Kenneth R. Chien, MD, PhD

Scientific Director, MGH Cardiovascular Research Center  
Professor, Department of Stem Cell and  
Regenerative Biology, Harvard University



**Kenneth Chien, M.D.** is a world-recognized leader in cardiovascular science and medicine. Since July, 2005, Dr. Chien has returned to Boston as Scientific Director of the Cardiovascular Research Center at MGH and the Charles Addison and Elizabeth Ann Sanders Professor in the Department of Stem Cell and Regenerative Biology at Harvard University in Cambridge. Dr. Chien has a strong interest in physician-scientist training, having served as the Director of the Institute for Molecular Medicine at UCSD and professor at the Salk Institute. Dr. Chien's laboratory has reported the discovery of a "master" heart progenitor cell, marked by the expression of *Islet-1*, in the mammalian heart, which play a critical role in generating diverse cardiovascular lineages during cardiogenesis. Dr. Chien has served as an advisor and/or board member to several scientific institutions in the public and private sector, including the Karolinska Institute, Doris Duke Charitable Foundation, The Wellcome Trust, Institute of Molecular Biotechnology of Austria, Genentech, Pfizer and Wyeth.

### Jay Rajagopal, M.D.

Assistant Professor in Medicine  
Division of Pulmonary and Critical Care, MGH



**Jay Rajagopal, M.D.** is an Assistant Professor with appointments at the Harvard Stem Cell Institute and Center for Regenerative Medicine and a pulmonologist at the Massachusetts General Hospital. His current focus is the identification of a bonafide lung stem cell. His research program also includes projects to differentiate human embryonic stem cells into lung cells and projects that involve the use of large screening platforms to isolate and identify self-renewing lung stem cells in culture.

## CONCURRENT SESSION II:

### Delivering Global Healthcare

#### Jennifer Leaning, M.D., S.M.H.

Associate Professor in Medicine  
Director of the Harvard François-Xavier Bagnoud  
Center for Health and Human Rights  
at Harvard University



**Jennifer Leaning, MD, SMH** is the Director of the Harvard François-Xavier Bagnoud Center for Health and Human Rights at Harvard University, the FXB Professor of the Practice of Health and Human Rights at Harvard School of Public Health and Associate Professor of Medicine at Harvard Medical School and an expert in public health and rights-based responses to humanitarian crises. Prior to her current appointment, Dr. Leaning served for five years as co-director of the Harvard Humanitarian Initiative. From 1999 to 2005, Dr. Leaning directed the Program on Humanitarian Crises and Human Rights at the FXB Center. During the 1980s and 1990s, Dr. Leaning held progressively responsible roles in medical management at Harvard Community Health Plan and worked clinically in emergency medicine at Brigham and Women's Hospital. She has served on the boards of Physicians for Human Rights, Physicians for Social Responsibility and Oxfam America and currently is a member of the Board of Directors of the Humane Society of the United States and the Massachusetts Bay Chapter of the American Red Cross. She earned her B.A. magna cum laude from Radcliffe College, her masters of science from HSPH, and her M.D. with honors from the University of Chicago Pritzker School of Medicine.

#### Megan Murray, M.D., M.P.H., Sc.D.

Associate Professor in Medicine  
Director of Research at the BWH Division  
of Global Health Equity, Partners In Health and  
the Department of Global Health and Social Medicine



**Megan Murray, MD, MPH, ScD** is an epidemiologist and an infectious disease physician, whose work focuses on the management of TB programs and TB epidemiology. After graduating from Dartmouth College in 1980, Dr. Murray worked with the Intergovernmental Committee for Migration in Thailand managing a TB screening program for refugees being resettled in other countries. She then attended Harvard Medical School and completed a residency in Internal Medicine at Massachusetts General Hospital where she went on to specialize in Infectious Diseases and conducted research on methodological issues in TB epidemiology while obtaining her MPH and ScD at the Harvard School of Public Health. Dr. Murray is an Associate Professor of Medicine and the Director of Research at the Brigham and Women's Hospital Division of Global Health Equity and its sister organizations, Partners In Health and the Department of Global Health and Social Medicine at Harvard Medical School. She is also an Associate Professor of Epidemiology at the Harvard School of Public Health where she leads a research team which conducts multidisciplinary research on MDR and XDR TB involving conventional and molecular epidemiology, cost-effectiveness and mathematical modeling, outcomes and operations research, and genomic epidemiology.

#### Kristian Olson, M.D.

Associate Director of Education and Technology  
Innovation at MGH Center for Global Health



**Kris Olson, M.D.** is both an Internist and Pediatrician and serves as a Clinician Educator at the Massachusetts General Hospital. He is the Assoc Director of Education and Technology Innovation at the MGH Center for Global Health and the Program Leader of CIMIT's Global Health Initiative directed at developing catalyst health technologies for low-income countries. He attended medical school at Vanderbilt University and was a Fulbright Scholar to Australia where he completed a Masters of Public Health. Dr. Olson was the first Durant Fellow in Refugee Medicine during which he obtained a Diploma in Tropical Medicine in London before spending 2003 working in refugee camps along the Thai-Burmese Border. He has worked in Darfur, Indonesia, Cambodia, and Ethiopia. In 2009, he was named to the *Scientific American* Top 10 Honor Roll as an individual who has demonstrated leadership in applying new technologies and biomedical discoveries for the benefit of humanity.

#### Larry Ronan, M.D.

Co-founder and Executive Board Member of the  
MGH Center for Global Health



**Dr. Laurence J. Ronan** is a staff physician at the Massachusetts General Hospital in Boston, Massachusetts. He is the Team Internist for the Boston Red Sox (2005 - ). He serves as the Senior Advisor to the Center for the Medical Integration of Innovative Technology (CIMIT) and for the MGH/Red Sox Home Base Program for Veterans. Dr. Ronan is the Director of the Thomas S. Durant, MD Fellowship in Refugee Medicine at Massachusetts General Hospital ('03 - ) and co-founder and Executive Board Member of the MGH Center for Global Health. He is on the Executive Committee for the Harvard Humanitarian Initiative (2007 - ). He is Co Director of the Mass General Office for Disaster Response. (2010 - ). He has participated as a volunteer with the military, Project Hope and the Uniformed Health Services in the medical responses to humanitarian disasters and has led medical teams in the tsunami, Katrina, and Haiti earthquake. He has worked in Iraq under a State Department contract with International Medical Corp to provide continuing medical education to Iraqi physicians (2004 - 2010). He is presently working in Haiti with IMC and the Haitian Medical Association on developing CME programs (2010 - ).

#### David Bangsberg, M.D., M.P.H.

Director of the MGH Center for Global Health  
Director of the International Program of the Harvard  
University Center for AIDS Research



**David Bangsberg, MD, MPH** is Director of the Massachusetts General Hospital Center for Global Health, Director of the International Program of the Harvard University Center for AIDS Research, Associate Professor at the Harvard School of Medicine and Professor at Mbarara University of Science and Technology. He holds Master's Degrees in Public Health from the University of California, Berkeley and the History and Philosophy of Science from Kings College, London. Dr. Bangsberg's research focuses on social behavioral factors related to HIV treatment access, treatment adherence and treatment outcomes in impoverished populations. His work was recognized by President Bill Clinton as "the nail in the coffin" on the debate as to whether poor people in Africa could adhere to HIV treatment and two of his papers on HIV treatment in sub-Saharan Africa were voted by the editors of the *Lancet* as the most important papers in 2006.

## CONCURRENT SESSION II: Investing in Innovation

### Albert G. Mulley, Jr., M.D., M.P.P.

Director of the Dartmouth Center for Health Care Delivery Science  
Dartmouth College



**Al Mulley, M.D.** is Director of the Dartmouth Center for Health Care Delivery Science at Dartmouth College and Professor of Medicine at Dartmouth Medical School. He graduated from Dartmouth College in 1970 and was awarded MD and MPP degrees from Harvard Medical School and the Kennedy School of Government in 1975 before spending 35 years on the Harvard faculty and the staff of Massachusetts General Hospital where he was the founding Chief of the General Medicine Division and Director of the Medical Practices Evaluation Center. Dr. Mulley's research has focused on the use of decision theory and outcomes research to distinguish between warranted and unwarranted variations in clinical practice. He was a founding director of the Foundation for Informed Medical Decision Making and continues to serve as senior clinical advisor. He has also served on multiple committees of the Institute of Medicine, of professional societies and as a consultant and visiting professor to government agencies, health care organizations.

### Rushika Fernandopulle, M.D.

President, Iora Health



**Rushika Fernandopulle, M.D.** is a practicing general internist who is co-founder and CEO of Iora Health, a company building new, more intensive, relationship-based primary care practices to dramatically improve quality and service and reduce overall health care costs. He has started and run his own practice based on the Patient Centered Medical Home model in Arlington, MA as well as a practice for complex chronic patients in Atlantic City, New Jersey. He also serves as an Entrepreneur in Residence at Fidelity Biosciences, and as a visit on the Bigelow Medical Service at the MGH. He earned his A.B., M.D., and M.P.P. (Masters in Public Policy) from Harvard University, and completed his primary care internal medicine residency at MGH in 1999.

### Henry Chueh, M.D.

Director of the MGH Laboratory of Computer Science  
Chief of the Division of Biomedical Informatics at MGH



**Henry Chueh, M.D.** is Director of the Massachusetts General Hospital (MGH) Laboratory of Computer Science and Chief of the Division of Biomedical Informatics at MGH, and Chief Medical Informatics Officer of the MGH Center for Quality and Safety. He is also a practicing internist at the MGH Internal Medicine Associates. A graduate of Harvard College, he received his medical degree from Harvard Medical School and a master's degree in medical informatics from the Harvard/MIT Health Sciences and Technology Program. After completing his residency training in internal medicine and his research fellowship in medical informatics at the MGH, Dr. Chueh joined the Department of Medicine faculty at MGH/Harvard Medical School. His activities at MGH have revolved around novel approaches to electronic health records and clinical research informatics, applications of which are in wide use today at MGH and Partners. His current research involves using informatics to transform health care through the creation of innovative care delivery models. Dr. Chueh was a past member of the NIH National Library of Medicine (NLM) Biomedical Library Review Committee, and is currently serving on the Board of Scientific Counselors for the Lister Hill Center for Biomedical Communications, the intramural research division of the NLM. He has been an elected member of the American College of Medical Informatics (ACMI) since 1999.

### Mike Rosenblatt, M.D.

Executive Vice President,  
Chief Medical Officer of Merck & Co., Inc



**Michael Rosenblatt, M.D.** is Executive Vice President and Chief Medical Officer of Merck & Co., Inc. He is the first person to serve in this role for Merck. Previously he served as Dean of Tufts University School of Medicine. Prior to that, he held the appointment of George R. Minot Professor of Medicine at Harvard Medical School. He served as the President of Beth Israel Deaconess Medical Center (BIDMC) from 1999-2001. Previously, he was the Harvard Faculty Dean and Senior Vice President for Academic Programs at BIDMC. Prior to that, he served as Director of the Harvard-MIT Division of Health Sciences and Technology, during which time he led a medical education organization for M.D., Ph.D., and M.D.-Ph.D. training jointly sponsored by Harvard and MIT. And earlier, he was Senior Vice President for Research at Merck Research Laboratories where he co-lead the worldwide development team for alendronate (FOSAMAX), Merck's bisphosphonate for osteoporosis and bone disorders. From 1981 to 1984, he served as Chief of the Endocrine Unit, Massachusetts General Hospital. He received his undergraduate degree summa cum laude from Columbia and his M.D. magna cum laude from Harvard. His internship, residency, and endocrinology training were all at the Massachusetts General Hospital.

### Britain W. Nicholson, M.D.

Chief Medical Officer  
Senior Vice President, Department of Medicine  
MGH



**Brit Nicholson, M.D.** received his Medical Degree at Duke University in 1976. He completed his medical internship at Duke University Medical Center in 1977 and his residency training in Internal Medicine at Massachusetts General Hospital in 1980. From 1980-1982, Dr. Nicholson was a Kaiser Fellow in General Internal Medicine at Harvard Medical School. He joined the MGH Professional Staff in 1982 as Director, Medical Walk-in Unit, holding that position until 1992. Subsequent MGH appointments include Associate Chief of General Internal Medicine 1987-1990, Associate Chief, Department of Medicine 1990-1994, and Assistant General Director, Primary Care Development 1993-1994. In 1994, Dr. Nicholson was named Director, Primary Care. In 1997, he was appointed Senior Vice President, Primary Care and Chief Medical Officer. In 2010, Dr. Nicholson was appointed Senior Vice President, Department of Medicine and continues to hold the title of Chief Medical Officer.

## PLENARY SESSION IV The Policy and Design of National Health Care

### David Blumenthal, M.D.

Samuel O. Thier Professor of Medicine  
Professor of Health Policy at Harvard Medical School



**David Blumenthal, M.D.** is Samuel O. Thier Professor of Medicine and Professor of Health Policy at Harvard Medical School. From 1998-2009, he was founder and director of the Institute for Health Policy at MGH and Partners Health Care System, now the Mongan Institute for Health Policy. From 2009-2011, he served as National Coordinator for Health Information Technology for the Obama Administration, where he was responsible for leading the development of a nation-wide, interoperable, private and secure electronic health information system.

### Jonathan Woodson, M.D.

Assistant Secretary of Defense for Health Affairs  
Director, TRICARE Management Activity



**Jonathan Woodson, M.D.** is the Assistant Secretary of Defense for Health Affairs and Director, TRICARE Management Activity. In this role, he administers the more than \$50 billion Military Health System (MHS) budget and serves as principal advisor to the Secretary of Defense for health issues. The MHS comprises over 133,000 military and civilian doctors, nurses, medical educators, researchers, healthcare providers, allied health professionals, and health administration personnel worldwide, providing our nation with an unequalled integrated healthcare delivery, expeditionary medical, educational, and research capability. Dr. Woodson ensures the effective execution of the Department of Defense (DoD) medical mission. He oversees the development of medical policies, analyses, and recommendations to the Secretary of Defense and the Undersecretary for Personnel and Readiness, and issues guidance to DoD components on medical matters. He also serves as the principal advisor to the Undersecretary for Personnel and Readiness on matters of chemical, biological, radiological, and nuclear (CBRN) medical defense programs and deployment matters pertaining to force health.

### Farzad Mostashari, M.D., Sc.M.

National Coordinator for  
Health Information Technology  
Department of Health and Human Services



**Farzad Mostashari, M.D.** is the newly appointed National Coordinator for Health Information Technology at the U.S. Department of Health and Human Services. To this role, Dr. Mostashari brings a rich body of experience to continue leading the nation in constructing a healthcare system that uses information and technology to empower individuals, and improve both the health and health care of Americans. Dr. Mostashari first joined ONC as its deputy national coordinator in July 2009. During his tenure in this position, he developed a series of grant programs to promote electronic health record adoption; furthered the development of health information exchange; and helped construct the workforce development program. His vision has been instrumental in the formulation of the ONC's Health IT Strategic Plan, the creation of ONC's Authorized Testing and Certification Bodies, and will influence future stages of Meaningful Use.

### Eve E. Slater, M.D.

Associate Professor of Clinical Medicine,  
Columbia University Medical Center

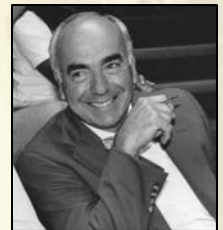


**Eve Slater, M.D.** (P&S '71, MGH resident and fellow '71-76, HMS Asst. Prof. '77-'82) has served as Assistant Secretary for Health (ASH), US Department of Health and Human Services ('01-'03), and in the pharmaceutical industry, as Senior Vice President of Worldwide Policy at Pfizer, Inc. ('07-'09) and SVP at Merck & Co., where she did basic research and later led Worldwide Regulatory Affairs for over a decade, overseeing the approval of two statins, and medicines for blood pressure control, HIV/AIDS, osteoporosis, asthma, and several major vaccines. She has expertise in health care policy, and drug development and safety evaluation. She has served on a number of Boards and National Committees to include the NIH OARAC, and the review committee of the FDA Science Board. Among her many awards are the Chairman's Award of Merck, the Virginia Kneeland Frantz Award (P&S), and the NIH's "Changing the Face of American Medicine". She is a Board certified cardiologist and internist who is currently Associate Professor of Clinical Medicine at Columbia, College of Physicians and Surgeons. She was the first woman Chief Resident in Medicine at MGH ('71), the first woman VP and SVP in Merck Research Laboratories, and the first woman ASH at HHS.

## Keynote Speaker

### Daniel D. Federman, M.D.

Senior Dean of Clinical Teaching,  
Harvard Medical School



**Daniel D. Federman, M.D.** is the Senior Dean of Clinical Teaching at Harvard Medical School. An endocrinologist by training, Dr. Federman maintains active clinical practices at Brigham and Women's Hospital and Harvard University Health Services. Dr. Federman served on the faculty of Harvard Medical School from 1960 to 1972, and was simultaneously on the staff of Massachusetts General Hospital. From 1972 to 1977 he was chairman of the Department of Medicine at Stanford Medical School. He then returned to Harvard Medical School as Dean for Students and Alumni and professor of medicine. In 1989 he was appointed Dean for Medical Education and in 1992 he was named the Carl W. Walter Professor of Medicine and Medical Education.

Dr. Federman has served as Chairman of the American Board of Internal Medicine and President of the American College of Physicians and is a member of the Institute of Medicine. He was one of the founding editors of *Scientific American® Medicine*.

Dr. Federman has received from the American College of Physicians both the Massachusetts Physician of the Year and the Distinguished Teacher awards, as well as the Endocrine Society's Distinguished Educator award. In 2001, the Association of American Medical Colleges honored Dr. Federman with their Abraham Flexner Award for Distinguished Service to Medical Education.

Born in New York City, Dr. Federman received his A.B. from Harvard College and his M.D. from Harvard Medical School. He was an intern in the MGH Internal Medicine Residency in 1953.

## PLENARY SESSION V

### The Direction of Academic Institutions

#### Daniel K. Podolsky, M.D.

President  
University of Texas Southwestern Medical Center



**Daniel Podolsky, M.D.** became President of the University of Texas Southwestern Medical Center at Dallas on September 1, 2008. He had previously been the Mallinckrodt Professor of Medicine at Harvard Medical School, the Chief of Gastroenterology at Massachusetts General Hospital, and the Chief Academic Officer of Partners HealthCare System. Dr. Podolsky received his undergraduate degree from Harvard College *summa cum laude* and his medical degree from Harvard Medical School, followed by residency training in Internal Medicine and a fellowship in Gastroenterology at Massachusetts General Hospital. He joined the faculty of Harvard Medical School and the staff of Massachusetts General Hospital in 1981; he was appointed Chief of Gastroenterology at Massachusetts General Hospital in 1989; and was named the Mallinckrodt Professor of Medicine at Harvard Medical School in 1998. From 2005 to 2008 he also served as Chief Academic Officer of Partners HealthCare System. Dr. Podolsky is the author of more than 300 original research and review articles. He is a recipient of the Julius Friedenwald Medal, the highest honor bestowed on a member of the AGA.

#### John Carethers, M.D.

Chair of the Department of Internal Medicine,  
University of Michigan



**John M. Carethers, M.D.** is Professor and Chair of the Department of Internal Medicine at the University of Michigan, a role he was recruited to in November 2009. As Chair, he oversees 640 faculty in their academic, clinical, and teaching roles as it relates the overall integration with the health system's missions of clinical excellence, education, and discovery. Dr. Carethers is a trained gastroenterologist and physician-scientist who focuses his research in the area of hereditary colon cancer genetics. Dr. Carethers received his B.S. degree in Biological Sciences with a minor in Chemistry from Wayne State University, and his M.D. with high distinction from the same institution. Dr. Carethers did his internship and residency in Internal Medicine at Massachusetts General Hospital, followed by a fellowship in gastroenterology at the University of Michigan. He was then recruited to the University of California San Diego where he grew his laboratory-based research in the area of DNA mismatch repair and colorectal cancer pathogenesis, saw medicine and gastroenterology patients, including serving as the main physician for hereditary colon cancer referrals in Southern California. He served in leadership roles including the gastroenterology fellowship director, the gastroenterology Section Chief for the San Diego VA Hospital, then Division Chief for UCSD before coming to Michigan. His research has been funded by NIH R01 and VA Merit grants, as well as was the PI on divisional T32 and Center grants. Dr. Carethers also has interests in colorectal cancer disparities, and was a principal investigator on an NIH U54 grant that address the many dimensions of cancer disparities. He is active in the American Gastroenterological Association (AGA), currently serving as Chair of its Gastrointestinal Oncology Section for the AGA Council, among other roles. He recently completed a 2-year appointment on the National Commission for Digestive Diseases, a U.S. Congressional Commission after his appointment by Elias Zerhouni, M.D., then Director of the NIH.

#### Lee Goldman, M.D.

Dean of the Faculties of Health Sciences and  
Medicine at Columbia University



**Lee Goldman, M.D., MPH**, is the Harold and Margaret Hatch Professor, Executive Vice President for Health and Biomedical Sciences, and Dean of the Faculties of Health Sciences and Medicine at Columbia University. He received his BA, MD, and MPH degrees from Yale. He did his internal medicine training at UCSF and MGH, and his cardiology training at Yale. From 1978-1995, positions at Harvard included Professor of Medicine and Professor of Epidemiology, while positions at Brigham and Women's Hospital included Vice Chair of Medicine and Chief Medical Officer. From 1995-2006, he was the Julius R. Krevans Professor, Chair of Medicine, and Associate Dean for Clinical Affairs at UCSF. Dr. Goldman's research focuses on cardiac risk in non-cardiac surgery, determining which patients with chest pain require hospital admission, establishing priorities for the prevention and treatment of coronary disease, and the scientific basis for the now ubiquitous chest-pain evaluation units and the first academic hospitalist program. Dr. Goldman is a member of the American Society for Clinical Investigation; past President of the Association of American Physicians, the Society of General Internal Medicine, and the Association of Professors of Medicine; and a member of the Institute of Medicine. He received the highest awards of the Society of General Internal Medicine (the Glaser Award), the American College of Physicians (the John Phillips Award), and the Association of Professors of Medicine (the Williams Award). Dr. Goldman is the lead editor of the *Cecil Textbook of Medicine*.

#### J. Larry Jameson, MD, PhD

Executive Vice President,  
University of Pennsylvania  
for the Health System  
Dean of the University  
of Pennsylvania School of Medicine



**J. Larry Jameson, M.D.** received his medical degree from the University of North Carolina and he performed clinical training in internal medicine and endocrinology at Massachusetts General Hospital where he served as Chief of the Thyroid Unit. In 1993 Dr. Jameson moved to Northwestern where he served in several leadership roles including Chief of the Division of Endocrinology, Chair of Department of Medicine, and Dean of the Feinberg School of Medicine. A prolific researcher and writer, Dr. Jameson's research has focused on the genetic basis hormonal disorders. He has authored more than 300 scientific articles in high impact journals. He is an editor of "Harrison's Principles of Internal Medicine", the most widely used medical text worldwide, and co-editor of "Jameson and DeGroot's Endocrinology", now in its 6th edition. Among a number of professional distinctions and honors, Dr. Jameson was elected to the American Academy of Arts and Sciences and the Institute of Medicine. Dr. Jameson has received several distinguished awards, including the highest honor from the Endocrine Society, the Koch Award.

## PLENARY SESSION V The Direction of Academic Institutions

### Laurie H. Glimcher, M.D.

Professor of Immunology,  
Harvard School of Public Health  
Professor of Medicine at Harvard Medical School



**Laurie H. Glimcher MD** is the Irene Heinz Given Professor of Immunology at the Harvard School of Public Health, and Professor of Medicine at Harvard Medical School. She has been named the Cornell University provost for medical affairs and the Stephen and Suzanne Weiss Dean at Weill Cornell Medical College in Manhattan, effective Jan. 1, 2012. She received her B.A. degree from Radcliffe College and her M.D. from Harvard Medical School. She received her postdoctoral training at Harvard and in the Laboratory of Immunology at the National Institute of Allergy and Infectious Diseases in Bethesda. She is board certified in Internal Medicine and Rheumatology, and is a Senior Rheumatologist at the Brigham and Woman's Hospital. She helps lead the Immunology Program at Harvard Medical School and directs the Division of Biological Sciences program at the Harvard School of Public Health. Dr. Glimcher received the Soma Weiss Award for Undergraduate Research, the Distinguished Young Investigator Award from the American College of Rheumatology, the Leukemia Society's Stohman Memorial Scholar Award, the Arthritis Foundation's Lee S. Howley Award, the FASEB Excellence in Science Award, the American Society of Clinical Investigation Investigator Award, the Klemperer Award, the AAUW Senior Scholar award, the Huang Meritorious Career Award, and the American College of Rheumatology Distinguished Investigator Award. She is a Fellow of the American Academy of Arts and Sciences, a Member of the Institute of Medicine of the National Academy of Sciences and a Member of the National Academy of Immunologists. Dr. Glimcher is a member of the American Asthma Foundation, Immune Diseases Institute, Health Care Ventures, Burroughs-Wellcome Fund and Memorial Sloan Kettering Cancer Center Scientific Advisory Boards and serves on the Cancer Research Institute Fellowship Committee. She is on the Corporate Board of Directors of the Bristol-Myers Squibb Pharmaceutical Corporation and the Waters Corporation.

### R. Sanders Williams, M.D.

President of the Gladstone Institute  
Former Dean of the School of Medicine  
at Duke University



**R. Sanders (Sandy) Williams, M.D.** is President of the Gladstone Institutes in San Francisco and Professor of Medicine at UCSF, having served previously as Dean of the School of Medicine at Duke University, as Founding Dean of the Duke-NUS Graduate Medical School in Singapore, and as Chief of Cardiology at the University of Texas Southwestern Medical Center. Prior to house staff training at MGH, he was educated at Princeton University and Duke School of Medicine. After MGH, he pursued fellowships in clinical cardiology and in biochemistry/molecular biology at Duke, Oxford University, and the Cold Spring Harbor Laboratory. His research has focused on gene regulation by physical activity as a determinant of cardiovascular and metabolic fitness.

## Author's Corner

### Siddhartha Mukherjee, M.D.



Siddhartha Mukherjee is a cancer physician and researcher. He is an assistant professor of medicine at Columbia University and a staff cancer physician at Columbia University Medical Center. A Rhodes scholar, he graduated from Stanford University, University of Oxford, Harvard Medical School. He has published articles in *Nature*, *The New England Journal of Medicine*, *The New York Times*, and *The New Republic*. He lives in New York with his wife and daughters. His book, "The Emperor of All Maladies: A Biography of Cancer," won the 2011 Pulitzer prize for general nonfiction.

### Dean Ornish, M.D.



**Dean Ornish, M.D.** is the founder and president of the non-profit Preventive Medicine Research Institute in Sausalito, California. He is Clinical Professor of Medicine at UCSF. For over 33 years, Dr. Ornish has directed clinical research demonstrating, for the first time, that comprehensive lifestyle changes may begin to reverse even severe coronary heart disease, without drugs or surgery. Recently, Medicare agreed to provide coverage for this program, the first time that Medicare has covered a program of comprehensive lifestyle changes. He directed the first randomized controlled trial demonstrating that comprehensive lifestyle changes may stop or reverse the progression of early-stage prostate cancer. His current research showed that comprehensive lifestyle changes affect gene expression for cancer and heart disease, as well as increasing telomerase (in collaboration with Dr. Elizabeth Blackburn, who was awarded the Nobel Prize in Medicine in 2009). He is the author of six best-selling books, including four *New York Times*' bestsellers: *Dr. Dean Ornish's Program for Reversing Heart Disease*; *Eat More, Weigh Less*; *Love & Survival*; and his most recent book, *The Spectrum*. The research that he and his colleagues conducted has been published in *JAMA*, *The Lancet*, *Proceedings of the National Academy of Sciences*, *Circulation*, *NEJM*, the *American Journal of Cardiology*, and *The Lancet Oncology*. He has written a monthly column for *Newsweek* and *Reader's Digest* magazines and is currently Medical Editor of *The Huffington Post*. Dr. Ornish is a member of the boards of directors of the San Francisco Food Bank and the J. Craig Venter Institute. He was appointed to the White House Commission on Complementary and Alternative Medicine Policy and elected to the California Academy of Medicine. He chaired the Google Health Advisory Council 2007-9.

### Webster Bull



**Webster Bull** is the Author of *Something in the Ether: A Bicentennial History of Massachusetts General Hospital, 1811-2011*. Since 1988, I have been writing and privately publishing personal memoirs, family histories, and organizational histories. I was inspired by my grandfather, former president of the Cream of Wheat Company, who wrote his own life story after my grandmother died. I began with one client: interviewing him, transcribing the interviews, and editing them into a coherent narrative of his life. I have completed over fifty personal memoirs and ten organizational histories, including the Massachusetts General Hospital.

# Who's Here....

John	Stanbury	1940	Cyrus	Hopkins	1964
Evan	Calkins	1946	Adolf	Karchmer	1964
Morton	Swartz	1947	Robert	Lawrence	1964
L. Holly	Smith	1948	James	McFarland	1964
John	Stoeckle	1948	Elizabeth	Schell-Frederick	1964
Kurt	Isselbacher	1950	O. David	Taunton	1964
Gerald	Foster	1951	Gilbert	Omenn	1965
Stephen	Krane	1951	Edward	Scolnick	1965
Daniel	Federman	1953	Lewis	Becker	1966
Karl Frank	Austen	1954	Michael	Brown	1966
Roy	Vagelos	1954	George	Cohen	1966
Thomas	Waldmann	1954	David	Dale	1966
Roman	DeSanctis	1955	Stephen	Doctoroff	1966
Charles	Keeval	1955	Joseph	Goldstein	1966
Mitchell	Rabkin	1955	Laurence	Sloss	1966
Arthur	Sasahara	1955	Harold	Sox	1966
Katherine	Waldmann	1955	Michael	Worthington	1966
Paul	Black	1956	James	Dineen	1967
Edwin	Maynard	1956	Laurence	Gardner	1967
John	Mills	1956	William	Kelley	1967
Arnold	Weinberg	1956	Robert	Liss	1967
Richard	Aster	1957	Harvey	Simon	1967
George	Baker	1957	William	Crowley	1969
Leslie	DeGroot	1957	Donald	Krogstad	1969
John	Potts	1957	William	Seaman	1969
Dwight	Robinson	1957	George	Thibault	1969
Bruce	Sams	1957	Lloyd	Axelrod	1970
Donald	Sutherland	1957	Stephen	Howell	1970
Ralph	Williams	1957	Henry	Kronenberg	1970
Cecil	Coggins	1958	Marc	Pohl	1970
George	Jacoby	1958	Dennis	Ausiello	1971
Robert	Schapiro	1958	Lawrence	Eron	1971
Hibbard	Williams	1958	Mark	Goldman	1971
Richard	Baringer	1959	Peter	Graze	1971
James	Carter	1959	Allen	Nimetz	1971
Frank	Davidoff	1959	Martin	Oster	1971
Karl	Engelman	1959	Leslie	Pyenson	1971
Paul	Griner	1959	Eve	Slater	1971
Martin	Mannik	1959	Bruce	Leslie	1972
Peter	Barrett	1960	John	Ricks	1972
George	Canellos	1960	Janet	Abrahm	1973
Stephen	Goldfinger	1960	Jay	Berzofsky	1973
Rex	Jamison	1960	James	Doroshow	1973
William	Stason	1960	Mark	Drapkin	1973
Samuel	Their	1960	Allan	Goroll	1973
William	Yount	1960	John	Hardin	1973
Newton	Hyslop	1961	David	Hooper	1973
Alan	Keitt	1961	Stephen	Hosea	1973
James	Spann	1961	Barbara	Murray	1973
Verne	Caviness	1962	Michael	Rosenblatt	1973
Brian	Henderson	1962	David	Slovik	1973
James	Lehrich	1962	Randall	Zusman	1973
Robert	Moellering	1962	F. Richard	Bringhurst	1974
John	Sheagren	1962	Mark	Clark	1974
Philip	Sparling	1962	Leslie	Fang	1974
W. Hal	Churchill	1963	David	Fink	1974
Robert	Copeland	1963	Eleanor	Hobbs	1974
Thomas	Gelehrter	1963	Lawrence	May	1974
Homayoun	Kazemi	1963	Amy	Pruitt	1974
Gordon	Moore	1963	Robert	Williams	1974
Samuel	Snodgrass	1963	Beverly	Woo	1974

# Who's Here....

John Baldwin	1975	Tim Fischell	1981
David Blumenthal	1975	Anne Goldfeld	1981
Stephen Calderwood	1975	J. Larry Jameson	1981
Lee Goldman	1975	Robert Johnson	1981
John Goodson	1975	Lee Kaplan	1981
Jennifer Link	1975	Margaret Liu	1981
Albert Mulley	1975	Dean Ornish	1981
James Nolan	1975	Robert Tepper	1981
Samuel Nussbaum	1975	James Thomas	1981
Mark Pasternack	1975	Kathleen Goonan	1982
Joseph Bonventre	1976	James O'Connell	1982
Jules Dienstag	1976	Roger Pomerantz	1982
Mark Fishman	1976	David Relman	1982
Phyllis Gardner	1976	Hasan Bazari	1983
Laurie Glimcher	1976	Hugh Calkins	1983
John Godine	1976	Christopher Coley	1983
Andrew Hoffman	1976	Howard Federoff	1983
Roger May	1976	Glenn Fishman	1983
John Mickey	1976	Dana Gabuzda	1983
James Richter	1976	Lawrence Gimple	1983
Alfred Sadler	1976	Barbara Greco	1983
John Smith	1976	Gale Haydock	1983
John Butterly	1977	Daniel Kuritzkes	1983
Robert Doroghazi	1977	Donald Landry	1983
Richard Grossman	1977	Stephanie London	1983
Richard Iseke	1977	Paula O'Connor	1983
Judith Kramer	1977	Harlan Pinto	1983
Barbara Nath	1977	Ann Taylor	1983
Stephen Oesterle	1977	Andrew Arnold	1984
Donald Payan	1977	Ricardo Cigarroa	1984
Laurie Raymond	1977	Cathy Colt	1984
Daniel Carr	1978	David Dichek	1984
Thomas Daniel	1978	Marcia Goldberg	1984
G. William Dec	1978	Juanita Merchant	1984
Donna Felsenstein	1978	Richard Page	1984
Michael Fifer	1978	Peter Slavin	1984
Lawrence Miller	1978	Debra Weinstein	1984
Britain Nicholson	1978	James Wilson	1984
Daniel Podolsky	1978	Michael Bierer	1985
Nancy Rigotti	1978	Claire Bloom	1985
Leslie Selbovitz	1978	Gary Curhan	1985
Thomas Shook	1978	Paul Huang	1985
Katharine Treadway	1978	John Rich	1985
Lewis Williams	1978	Thomas Richie	1985
Lynn Butterly	1979	Michael Seiden	1986
Jay Fishman	1979	Jose Vega	1986
Mason Freeman	1979	Steven Atlas	1987
Robert Hughes	1979	Ming Hui Chen	1987
Steven Jacoby	1979	Barry London	1987
Justine Meehan Carr	1979	Christopher O'Donnell	1987
Roger Perlmutter	1979	Laurence Ronan	1987
Mark Schoenfeld	1979	Perry Bickel	1988
Jonathan Woodson	1979	Sean Harper	1988
Karen Carlson	1980	Elaine Hylek	1988
Christopher Fellows	1980	Elaine Kaye	1988
Douglass Given	1980	Peter Klein	1988
Steven Hyman	1980	Joon Lee	1988
Elizabeth Petri Henske	1980	Andrew Luster	1988
Doros Platika	1980	Hiroshi Mashimo	1988
Isidore Tepler	1980	Gregg Meyer	1988
Gregory Thomas	1980	Christopher Rall	1988
Randall Thompson	1980	Andrea Reid	1988
Bruce Walker	1980	Edward Ryan	1988
Ray Watts	1980	Gail Semigran	1988
Marlene Durand	1981	Andrew Tager	1988

# Who's Here....

Michael Weiss	1988	David Altshuler	1994
Jeffrey White	1988	Harold Burstein	1994
Andrew Zinn	1988	Philip Dormitzer	1994
John Carethers	1989	John Fangman	1994
Lewis Chodosh	1989	Timothy Friel	1994
Henry Chueh	1989	Lauren Glickman	1994
Vivian Fuh	1989	William Hahn	1994
Eric Isselbacher	1989	Nicholas Kartsonis	1994
Howard Kesselman	1989	Laura Koth	1994
Christine Albert	1990	Benjamin Leder	1994
Ernie-Paul Barrette	1990	Benjamin Medoff	1994
Claudia Chae	1990	Jayaraj Rajagopal	1994
Benjamin Davis	1990	Joshua Bernstein	1995
Mittie Doyle Kelleher	1990	Ann Celi	1995
Patricia Gibbons	1990	Susan Domchek	1995
Rachel Givelber	1990	Wesley Fairfield	1995
Gordon Huggins	1990	Christine Hogan	1995
David Jaffe	1990	Herbert Lin	1995
Michael Mathier	1990	Michael Mannstadt	1995
Eric Mortensen	1990	Samuel McLean	1995
Megan Murray	1990	Kristen Patton	1995
Klaus-Martin Schulte	1990	David Roberts	1995
Andrew Segal	1990	Mark Rubenstein	1995
John Tucker	1990	Marc Sabatine	1995
Ramnik Xavier	1990	Danita Sanborn	1995
George Daley	1991	Stanley Shaw	1995
Donald Lloyd-Jones	1991	Katharine Stansmore	1995
Mary Mullen	1991	Karen Costenbader Kargere	1996
Timothy Naimi	1991	Rushika Fernandopulle	1996
Stephanie Seminara	1991	Brian-Fred Fitzsimmons	1996
Albert Shaw	1991	Nicholas Fleming	1996
Ravi Thadhani	1991	Elizabeth Frates	1996
Edus Warren	1991	David Jones	1996
Jonathan Bogan	1992	Rajani LaRocca	1996
Marc Boom	1992	Doreen Mensah	1996
Davoren Chick	1992	Farzad Mostashari	1996
Jay Edelberg	1992	Christopher Newton-Cheh	1996
Victor Freeman	1992	Robert Ostfeld	1996
Barrett Kitch	1992	Jeffrey Schnipper	1996
William Kormos	1992	Aneesh Singhal	1996
Julie Sharpless	1992	Monty Tew	1996
Vincent Young	1992	Jatin Vyas	1996
Clemens Bergwitz	1993	Amy Wheeler	1996
Anthony Boral	1993	Myles Wolf	1996
Deborah Ekery	1993	Vijay Yajnik	1996
Blair Fosburgh	1993	Deirdre Blake	1997
Ashok Khatri	1993	Sherri-Ann Burnett-Bowie	1997
Adam Kunin	1993	Andrew Chan	1997
John Lepore	1993	Sekar Kathiresan	1997
Daniel Lustgarten	1993	Samia Mora	1997
Quan Nguyen	1993	Jordan Shin	1997
Peter Rosenberg	1993	Karen Smirnakis	1997
Mark Sarnak	1993	Stelios Smirnakis	1997
Michael Severino	1993	Usha Tedrow	1997
Norman Sharpless	1993		
Cynthia Smith	1993		
Benjamin Suratt	1993		
Valerie Thadhani	1993		
Robert Vonderheide	1993		
Prescott Woodruff	1993		

# Who's Here.....

Zoltan	Arany	1998	Eugene	Rhee	2003
Jennifer	Brown	1998	Kathryn	Ruddy	2003
Lara	Goitein	1998	Rory	Weiner	2003
Reshma	Kewalramani	1998	Amy	Boutwell	2004
Kristian	Olson	1998	Carlos	CarneirodeCastro	2004
Amanda	Peppercorn	1998	Sreekanth	Chaguturu	2004
Jeffrey	Peppercorn	1998	Brian	Chan	2004
Gregory	Ruhnke	1998	Jay	Giri	2004
Stephen	Servoss	1998	Anna	Greka	2004
David	Spragg	1998	Charles	Hardin	2004
Marylyn	Addo	1999	Patrick	Lee	2004
Caroline	Birks Brown	1999	Rajeev	Malhotra	2004
Cynthia	Cooper	1999	Peter	Noseworthy	2004
Iris	Jaffe	1999	Eveline	Oestreicher	2004
Gregory	Lewis	1999	Read	Pukkila-Worley	2004
Juan	Pallais	1999	Melissa	Putman	2004
Julie	Servoss	1999	Marwan	Refaat	2004
Brendan	Everett	2000	Rachel	Simmons	2004
Ann	Kao	2000	Leigh	Simmons	2004
Anne	Kasmar	2000	David	Sykes	2004
Naomi	Leeds	2000	Hans	Ackerman	2005
Alexander	Morss	2000	Alexis	Beatty	2005
Siddhartha	Mukherjee	2000	Roby	Bhattacharyya	2005
Sahil	Parikh	2000	Megan	Coffee	2005
Deborah	Wexler	2000	Andrew	deLemos	2005
Meghan	Baker	2001	Jason	Faris	2005
Ishir	Bhan	2001	Ariel	Frey	2005
Samuel	Brown	2001	Heather	Gunter Moss	2005
Carmella	Evans-Molina	2001	Susan	Kansagra	2005
Derek	Haerle	2001	Benjamin	Kornitzer	2005
AmyJo	Kind	2001	Mandy	Krauthamer Cohen	2005
Daniel	Krauser	2001	Michael	Mansour	2005
Richard	Lee	2001	Deepak	Nijhawan	2005
Rotonya	McCants Carr	2001	Surajit	Nundy	2005
Duyen	Ngo	2001	W. Steve	Stigler	2005
Deanna	Nguyen	2001	Rajesh	Swaminathan	2005
T. David	O'Halloran	2001	Ryan	Thompson	2005
David	Poppers	2001	Sheila	Arvikar	2006
Steven	Russell	2001	Adam	Crystal	2006
Matthew	Weiss	2001	Kumar	Dharmarajan	2006
Heather	Yeckes-Rodin	2001	Estelle	Docteur Jean	2006
Tong	Zhu	2001	David	Dudzinski	2006
Chrisfouad	Alabiad	2002	Sarah	Goldberg	2006
Yi-Bin	Chen	2002	Elizabeth	Guancial	2006
Maros	Ferencik	2002	Kathryn	Hibbert	2006
Erica	Linden	2002	Emily	Hyle	2006
Michelle	O'Donoghue	2002	Davender	Khera	2006
S. Mike	Rothenberg	2002	Alyssa	Letourneau	2006
Elizabeth	Speliotes	2002	James	Lo	2006
Nii	Tetteh	2002	Peter	Moschovis	2006
Karen	Thomas	2002	Michael	Pacold	2006
Victor	Chiappa	2003	Kerri	Palamara	2006
Katerina	Christopoulos	2003	Lee	Park	2006
Kathleen	Corey	2003	Esperance	Schaefer	2006
Stephen	Fink	2003	Ravi	Shah	2006
Annemarie	Fogerty	2003	Gaurav	Upadhyay	2006
Sidney	Glasofer	2003	Sadhna	Vora	2006
Sarah	Kent	2003	Nancy	Wei	2006
Faisal	Merchant	2003			
Joshua	Moss	2003			
Robert	Owens	2003			
Kathleen	Powis	2003			
Douglas	Pugliese	2003			
Brent	Ragar	2003			

# Who's Here....

Andrew	Aguirre	2007	George	Alba	2011
Claude	Alabre	2007	George	Anesi	2011
Rima	Arnaout	2007	Judith	Briant	2011
Vanessa	Bradford Kerry	2007	Ishani	Ganguli	2011
Gwen	Crevensten	2007	Ben	Izar	2011
Christian	Dankers	2007	Emma	Kaplan-Lewis	2011
Phillip	Erwin	2007	Rachel	Kohn	2011
Rajat	Gupta	2007	Henry	Kramer	2011
John	Hinson	2007	David	Leaf	2011
Andrew	Lundquist	2007	Creagh	Milford	2011
Amit	Majithia	2007	Amulya	Nagarur	2011
Oyere	Onuma	2007	Lipi	Roy	2011
Alaka	Ray	2007	Elizabeth	Scoville	2011
Sarah	Russell	2007	Sachin	Shah	2011
Andrew	Sauer	2007	Jacob	Soumerai	2011
Allyson	Schwartz	2007	Suman	Srinivasa	2011
Erica	Shenoy	2007	John	Tsay	2011
Jason	Wasfy	2007			
Jodi	Zilinski	2007			
Meagan	Murphy	2008			
Sonali	Paul Shah	2008	Farhad	Abtahian	current faculty
Jason	Sanders	2008	Amin	Arnaout	current faculty
Anthony	Sturzu	2008	Daniel	Arons	current faculty
Harry	Thomas	2008	Bernard	Aserkoff	current faculty
Dana	Ackerly	2009	David	Bangsburg	current faculty
Ravikumar	Balasubramanian	2009	Sylvie	Bretton	current faculty
Natalia	Berry	2009	Scott	Butsch	current faculty
Fernando	Contreras Valdes	2009	Kenneth	Chien	current faculty
Clayton	Knox	2009	Kathleen	Finn	current faculty
William	Kostis	2009	Lawrence	Friedman	current faculty
Susan	Mathai	2009	Garner	Haupt	current faculty
Oluseyi	Ojeifo	2009	Daniel	Hunt	current faculty
Ithan	Peltan	2009	J. Keith	Joung	current faculty
Vernon	Rayford	2009	David	Kanarek	current faculty
Renee	Rutledge	2009	Elizabeth	Luise	current faculty
Sarah	Turbett	2009	Kenneth	Minaker	current faculty
Tara	Albano	2010	Walter	O'Donnell	current faculty
Marjory	Bravard	2010	Terrence	O'Malley	current faculty
Andrew	Brunner	2010	Randall	Peterson	current faculty
Jennifer	Joe	2010	Leon	Ptaszek	current faculty
Sahir	Kalim	2010	Charles	Pu	current faculty
Kimiyoshi	Kobayashi	2010	Lessie	Robb-Nicholson	current faculty
Omar	Maarouf	2010	David	Scadden	current faculty
Shibani	Mukerji	2010	Susan	Seward	current faculty
Sagar	Nigwekar	2010	Neil	Shore	current faculty
Patricia	Scripko	2010	Thomas	Spitzer	current faculty
Matan	Setton	2010	Valerie	Stone	current faculty
Ada	Stefanescu	2010	Leslie	Vensel	current faculty
Adina	Voiculescu	2010	Lee	Zou	current faculty
Zachary	Wallace	2010	Margaret	Lippincott	current fellow
James	Young	2010	Naina	Rastalsky	current fellow
Mary	Zhang	2010	Kimberly	Lewis	current staff
Xiaosong	Zhang	2010			